

## Labeling Your Work Using a Copier and Woodburner

By Ed Malesky

You can add a very artistic and personal label to your work using your computer, an inexpensive woodburning tool and access to a copier.

They are so easy to do you can create labels that show species and dates and can even add simple graphics for special occasions.

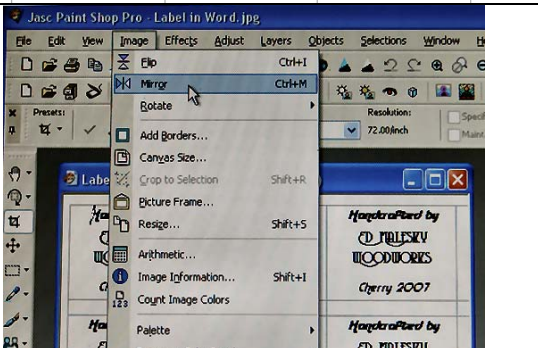


You can either use a wordprocessing program or a graphics program to create your label.

Since the labels are easy to create, I generally include versions with the species I plan to turn and the year and create a few copies of each. I'll end up with a whole page of labels.



The labels must then be reversed. I can't do this in my wordprocessor, so I copy to a graphics program and use the "flip" or "mirror" command



I end up with a sheet of labels that look like this. I print them on my inkjet printer, but an inkjet label won't work, so I need to do one more step.

This process will only work on prints done on a laser printer or from a copier because they use a toner of resin and carbon black to create the image. The toner can be softened with heat and transferred to another surface.

I then simply copy the label sheets (I use the copier at the local library).



You also need a simple woodburner with a "Transfer Point". These are available in most local hobby and crafts stores for around \$15-20.

Make sure they have the tip shown in the picture.



The transferring process is simple, but takes a little practice to know when the iron temperature is just right. Plug in the iron and let it warm up a few minutes.

Position the label on your unfinished piece, print side down on the piece. Start to "iron" the back of the label to heat up the resin to begin transfer. Make sure you hold the label in position or tape it down, so it doesn't move.

Keep the iron moving the whole time. If you let the iron sit too long in one place it will scorch the wood leaving a discoloration. If you do this you can sand the label off and start again.

I generally hold the label on one side and pick up the other side to peek under and see if the transfer is complete. I often have to retouch some areas to complete the transfer, which is why you don't want the label to slip.

Then finish your piece as normal.

