

June

June 2017
Volume 17 Issue 6

Northeast Florida Woodturners Association

An Affiliate of the American Association of Woodturners – Club Number 130 - jaxturners.org

President's Message



Addiction is defined by Webster as, “dependence on or commitment to a habit, practice, or habit forming substance to the extent that its cessation causes trauma. “ Well I guess I am addicted to woodturning.

You see I have finally bitten the bullet and decided to add air conditioning to my shop. That’s the good news. The bad news is the process of installing insulation, paneling, additional electrical wiring, and AC unit required me to stop turning and empty my shop of 90% of its contents. Then since my shop was almost empty I decided that now is the time to empty it completely and redo the floor and add storage cabinets. While I am trying to use this time without turning to catch up on activities I typically put off (like writing my monthly article for the newsletter) all total I will be 3 weeks without turning and my “addiction” is becoming apparent. My sympathy’s go out to Daniel, Fred and any other turner who has endured an extended time without turning. When my project is complete I don’t expect to suddenly be a better turner but I know I will be much more comfortable in my workshop and have a greater appreciation for my time at the lathe.

Regarding woodturning safety, the AAW recently sent an email to all woodturning clubs informing us of a recent fatality resulting from fractal burning. As a result of this incident the AAW adopted a policy against the practice of fractal burning. In summary the AAW policy is: the process known as Fractal Burning is

prohibited from being used in any AAW sponsored events and the AAW chartered chapters are strongly urged to refrain from demonstrating or featuring the process in chapter events.

I am pleased to announce that Woodcrafts’ Mothers Day Bowl sale was a huge success and I want to thank everyone who so generously donated bowls toward this worthy event. In total Woodcraft raised a record \$940.00 that will be donated to “Beads of Courage” at the Wolfson Children Clinic.

I would also like to announce that the Northeast Florida Woodturning Club Mentoring program is up and running. If you are interested in improving your skills in a specific area of turning just go to our website and click on the “Members Area” tab then click on “Mentoring” and contact the person offering help in the area you are interested in. Since this program is just getting started the board welcomes your feedback regarding ways to make the program more effective.

In closing, I am proud to announce that our new club lathe has been delivered and will be ready for use by Keith at our next club meeting. Keith’s demonstration topic “Those other Tools - Everything but the Bowl Gouge” promises to be a topic that I know everyone will benefit from. Please come to the meeting and help christen our new lathe.



“Yep ... I reckon the woodworkers are in town again.”

Committee Reports

Library – Liz Jensen – Forbell

No new information to report

Website – Keith Larrett

No new information to report

Safe Harbor – Kay Seivert

No new information to report

New Members - Paul Rushton

After polling some of our newest members, I learned that most of them found out about the club by 'word of mouth' from others. So, fellow club members, keep spreading the word!

Demonstrations - Tina Minahan

My report is that we are looking for volunteers to demonstrate in August, September, and October. Please consider stepping out side your comfort zone and teaching your fellow members. We will cheer you along. Thanks Tina!

Wood Raffle – Barbara Hahn

Cherry, Cedar and more! Bring \$

Treasury - Kathy McCall

Dues are still due!

National Demonstrators – Ed Malesky

No new information to report

Secretary - Don Penny

If you run across an article or tip you think would be of interest, please forward it to me!

Turning Tips

Buying Your

First Bowl Gouge

By John Lucas

For a beginner, buying turning tools can be a daunting task. Do you choose high-carbon steel, high-speed steel (HSS), or powdered metallurgy? What about cryogenically treated tools? Out of the confusion of tools available, which one do you really need? Sometimes it depends on what you turn, but even then, every turner seems to have a different opinion.

Before making a recommendation, I asked turners from beginner to professional what they own and what

they would recommend for a beginner. Almost all recommended a $\frac{3}{8}$ " or $\frac{1}{2}$ " bowl gouge.

It's important to note that English gouges are designated by flute width while American gouges measure the diameter of the shaft. A $\frac{1}{2}$ " American gouge is about the same as a $\frac{3}{8}$ " English tool, so it's possible some turners were actually recommending the same tool.

What steel?

Because high-carbon steel doesn't hold an edge and carbide is too hard to sharpen, most professionals favor high-speed steel and powdered-metallurgy tools.

You won't find new gouges manufactured from high-carbon steel or carbide. You'll choose between standard HSS (most are M2) and high-wear steels (often in powdered metal) like 2030, 2060, A11, and V15. Although cryogenically treated tools offer an advantage in edge holding, they are expensive for a beginner.

The bowl gouge will become the most versatile tool in your toolbox.

With a properly ground bowl gouge you can rough-turn a bowl, form the outside and hollow the interior, and shear-scrape it to a smooth finish. The gouge is also fine for roughing end-grain boxes and hollowing vases. (It tends to scrape rather than cut end grain.) Some turners prefer a V-shaped flute, some a U-shaped flute, while others prefer the superflute, a shape somewhere between a V and a U. I have all three types at my lathe and find only minor advantages of one over the others. For a beginner, proper sharpening is more important than flute shape.

What profile?

Bowl gouges are available with tips ground to the manufacturer's standard profile or to a special profile developed by any of several well-known professional turners. The tip profile most often recommended for a beginner is the transition or fingernail grind. After experience (50-plus bowls), you may want to try the Irish (also known as the Celtic or Ellsworth) grind.

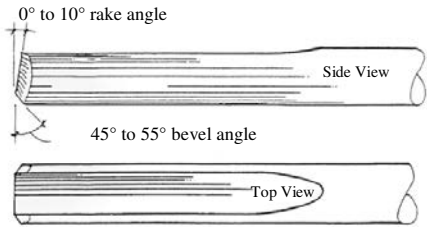
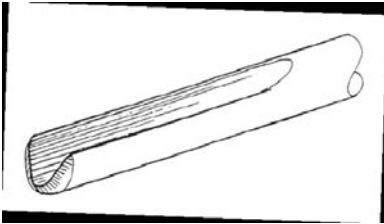
Using the Oneway Wolverine Sharpening System with the Vari- Grind Jig is an easy way to form a similar shape. *Fundamentals of Sharpening*, an AAW video, has excellent instructions on three techniques for sharpening a bowl gouge, making it easy to choose a method that works best for you. (For details, see woodturner.org/products.) The angles shown are typical ranges.

I'm confident that a $\frac{3}{8}$ " or $\frac{1}{2}$ " HSS or powdered-metal bowl gouge with a transition grind will get any beginning turner started on the road to enjoying bowl turning.

John Lucas (johnlucas@charter.net) is Shop Tips editor for American Woodturner and frequently demonstrates

Traditional Grind

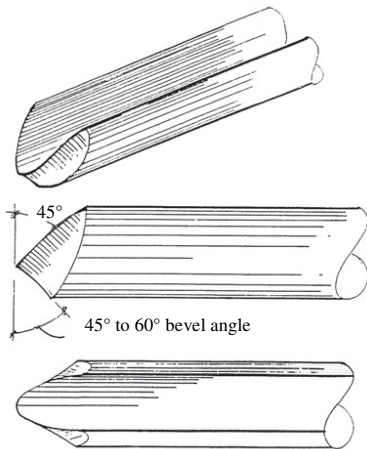
A traditional grind has some sound applications: the outside of a face grain bowl when mounted backward (base is at tailstock side) or for opening the interior of a bowl (opening is now facing tailstock side).



This 3/8" bowl gouge has a fingernail grind.

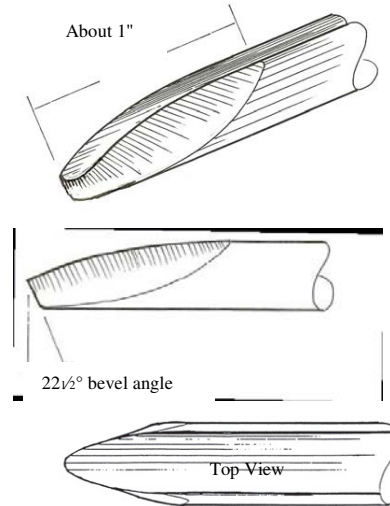
Transition or Fingernail Grind

Many turning instructors recommend the transition (fingernail) grind to new turners. You work the outside of a face-grain bowl regardless of the orientation. The ground sides allow limited shear-scraping.



Irish Grind

Experienced turners may prefer the more complicated Irish grind. It's a good tool for roughing bowls, detailing (with the elliptical front), shear-scraping, and smoothing the transition from sides to bottom.



Copyright 2008, 2016, American Association of Woodturners. All rights reserved.

Instant Gallery









Demonstration

Keith Larrett is dusting off those tools we seldom use to show us “Those other Tools - Everything but the Bowl Gouge” I can’t wait!

Jacksonville Fair

Can you believe it is time to get ready for the Fair already? It is only 5 months away so here are the 2017 guidelines, categories and prizes

The 2017 theme will be “**Turned Objects**” with entries accepted in two (2) categories:

1. **Conventional Turned Objects Category:** This category is for unembellished, turned objects. The piece must be turned with no additional elements other than clear finish if desired.
2. **Embellished Object:** This category is for those who wish to show their turning as an artistic expression. The primary portion of the piece must be turned, but may incorporate additional elements, finishes to express the theme.

Entries will be accepted on Sunday October 29th, in Exhibit Hall "A" **from 10:00 am - 2:00 pm.** Exhibits will remain on display through the end of the fair, Sunday, November 12th. **Please complete a separate entry form for each entry you submit.**

- Each entry must be the sole work of the entrant.
- It is preferred that the entry be created in response to the challenge of this contest but pieces completed within the 12 months prior to entry are eligible.
- Wood must be the primary medium and the use of the lathe must be obvious.
- Contest promoters and/or sponsors are not responsible for late, incomplete or misdirected entries.

- An entrant may submit a total of up to three (3) entries but may only receive a **maximum of one prize in each category.** Please complete a separate entry form for each entry you submit.
- The judges' decision will be final. Judging will be done by an 2 independent panels who will judge both categories
 - **Traditional** – Made up of artists in the wood craftsmanship community who will judge:
 - Quality of work, overall craftsmanship and degree of difficulty
 - Design, form, originality and overall execution of the piece
 - Quality of finish and is the finish appropriate for the piece
 - Wood selection and the use of the element of the selected wood
 - **Embellished** – Made up of artists not normally associated with wood craftsmanship who will judge:
 - Pieces will be judged on the best use of additional elements to express the title or theme of the piece as well as presentation and form of the object.

Prizes In Each Category Will Be:

First Prize - \$150.

Second Prize - \$100.

Third Place - \$50

And new this year

One Honorable Mention Prize for a piece by a new turner - \$50 Pieces may be submitted in either category but must be a turner who began turning after October 2016

Pick-up: Entries may be picked up beginning at 8:00 pm on Sunday, November 12th or through noon, Monday, November 13th. Awards will be mailed after the conclusion of the fair.

Calendar of Events

- Northeast Florida Woodturners Association Meeting – June 8th at 6:00PM at Woodcraft located at 11160 Beach Blvd.

